



KIMPTON SHINJUKU TOKYO

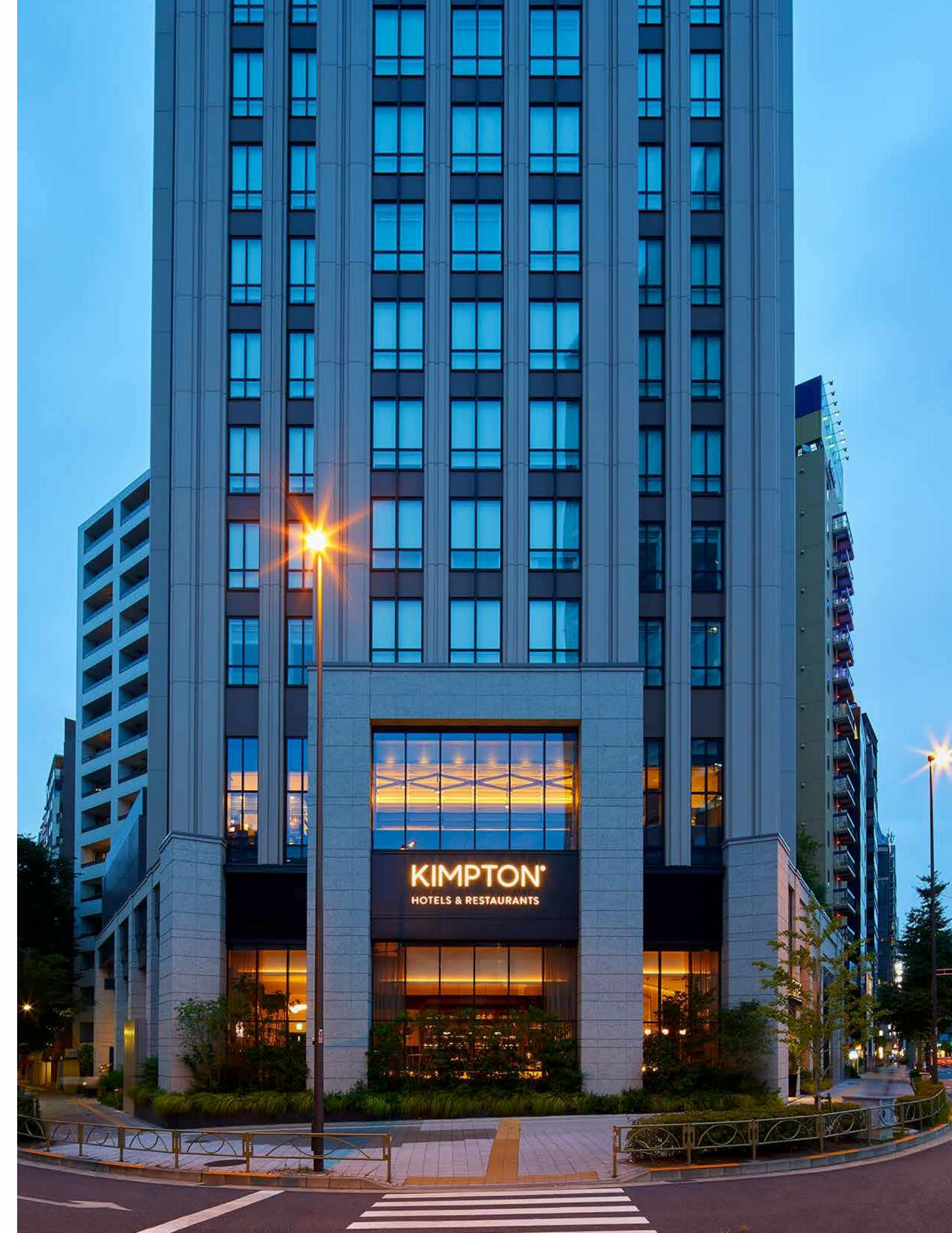
New York Meets Tokyo

- Manhattan meets Shinjuku

Like the best galleries, there is always something new to see and experience, from art installations to retail pop-ups and locally loved restaurants. The hotel soaks up the energy from the bustling Shinjuku district—one of the city's most iconic areas—and manages to offer a slice of serenity within it, a calm oasis with a relaxing terrace bar, seamless service, and luxurious rooms with beds you can sink into. We're able to offer you some little extras that will make your event shine - including complimentary Wi-Fi for your delegates and creative meeting and event concept consultation with our event curator.

For an event that will stand out from the crowd, our meeting and event spaces are unlike anything else in Tokyo. We have a multifunctional space that works well as an art exhibition space, weddings, runway for fashion shows, plus ballrooms with beautiful floor-to-ceiling windows that are blank slates just waiting to be customized with your outside-the-box ideas. Located in the famed skyscraper district of Shinjuku, Kimpton Shinjuku Tokyo is where culture and creativity come to life. You'll have the opportunity to work with our talented culinary team to find just the right menu for your meeting or event—we're happy to offer suggestions or work from scratch to bring your vision to the plate.

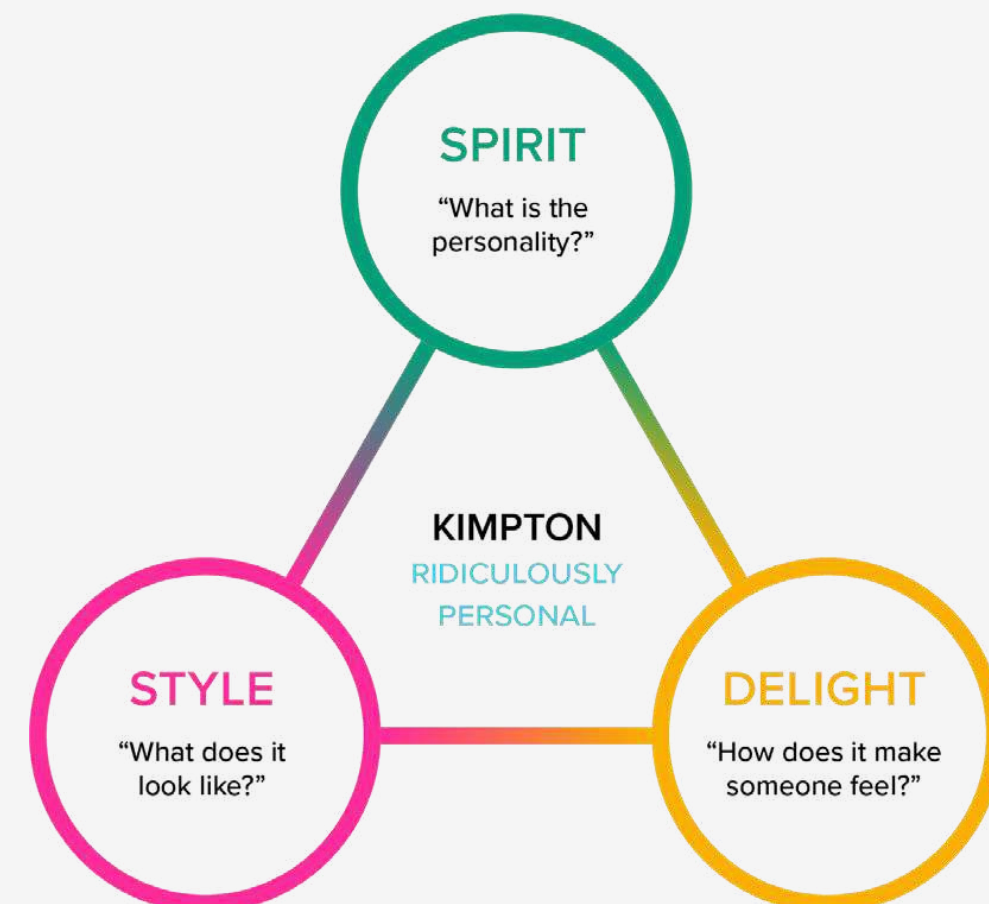
We look forward to guiding you through all the details to ensure your event is a success.



KIMPTON[®]

HOTELS & RESTAURANTS

- Service excellence with genuine delivery
- Luxury without the fuss
- Locally loved Restaurants and Bars
- Design leadership
- Inventive meetings and events
- Human consciousness





Tokyo Metropolitan Building



Shinjuku Gyoen



Harajuku Takeshita Street



Kabukicho



WELCOME TO SHINJUKU

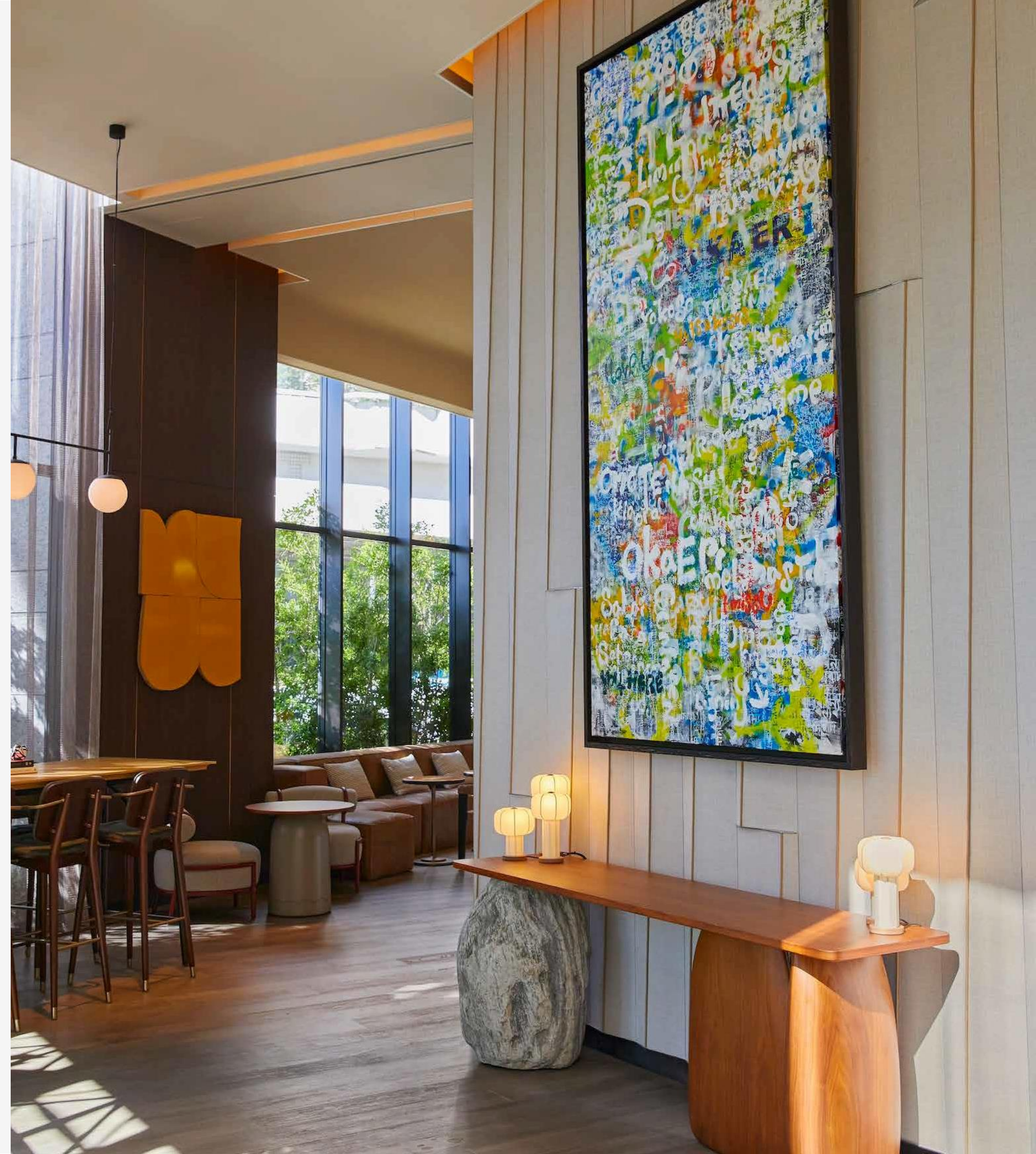
When you think of Tokyo, Shinjuku is likely to come to mind —it's like a city unto itself, an iconic district filled with bright lights, soaring skyscrapers, entertainment options galore, and trendy boutiques.

Kimpton Shinjuku Tokyo is close to all the action, including Shinjuku Central Park, Shinjuku Gyoen (famous for its cherry blossoms), Yoyogi Park, Meiji Shrine, Harajuku, and Omotesando. Take in the panoramic views from atop the Tokyo Metropolitan Building, wander the narrow alleyways of Golden Gai, ride a bike to Yoyogi Park, or marvel at the pulsating energy of Shibuya Crossing, considered to be the busiest intersection in the world —it's all within easy reach.

IT'S THE LITTLE THINGS THAT COUNT

In each guest room, you'll find everything you need for a superlative stay, including in-room yoga mats, rain showers and deep relaxing baths, local touches and printed Yukata robes by Japanese label HirocoLedge, Vifa Bluetooth speakers and fast WiFi whether you need to send a work email or post that artsy shot to social media.

Of course, we've considered not just what you need but what you want —like our Evening Social Hour hosted every evening, and Morning Kickstart to get you fueled for the day.



ROOM TYPES

Total Rooms: 151
Connecting Rooms: 22

<div>6x</div> <div>DELUXE TWIN</div> <div>24 square metres 1-2 adults 2 single beds Views of Yoyogi Park or Shinjuku Central Park Bathroom with rain shower and amenities from Atelier Bloem and Garnier Thiebout</div>	<div>40x</div> <div>PREMIUM KING</div> <div>33-36 square metres 1-2 adults 1 king-sized bed Views of Yoyogi Park or Shinjuku Central Park Bathroom with a deep relaxing bath, rain shower and amenities from Atelier Bloem and Garnier Thiebout (Connecting rooms available upon request when booking)</div>	<div>70x</div> <div>ESSENTIAL KING(29)/ TWIN(41)</div> <div>28-31 square metres 1-2 adults Choice of 1 king or 2 single beds Views of Yoyogi Park or Shinjuku Central Park Bathroom with a deep relaxing bath, rain shower and amenities from Atelier Bloem and Garnier Thiebout (Connecting rooms available upon request when booking)</div>
<div>23x</div> <div>1 KING ESSENTIAL CORNER</div> <div>30-31 square metres 1-2 adults 1 king-sized bed City view Bathroom with rain shower and amenities from Atelier Bloem and Garnier Thiebout</div>	<div>3x</div> <div>JUNIOR SUITE TWIN</div> <div>40 square metres 1-3 adults 2 single beds City view Impressive view of the city from the deep relaxing bath, rain shower and amenities from Atelier Bloem and Garnier Thiebout</div>	<div>2x</div> <div>JUNIOR SUITE KING</div> <div>40 square metres 1-3 adults 1 king-sized beds City view Impressive view of the city from the deep relaxing bath, rain shower and amenities from Atelier Bloem and Garnier Thiebout</div>
<div>3x</div> <div>PREMIER SUITE TWIN</div> <div>54 square metres 1-2 adults Choice of 1 king or 2 single beds Living space within guest room Views of city, Yoyogi Park, or Shinjuku Central Park</div>	<div>3x</div> <div>PREMIER SUITE KING</div> <div>52 square metres 1-3 adults 1 king-sized bed Living space within guest room Views of Yoyogi Park or Shinjuku Central Park Rain shower and amenities from Atelier Bloem and Garnier Thiebout</div>	<div>1x</div> <div>THE SHINJUKU SUITE</div> <div>70 square metres 1-2 adults 1 king-sized bed Living space within guest room City view Super-sized bathroom with impressive view of the city from the deep relaxing bath, rain shower and amenities from Atelier Bloem and Garnier Thiebout</div>



PREMIUM KING



JUNIOR SUITE TWIN



PREMIER SUITE KING

THE JONES

Whether you're looking for a wake-me-up espresso in the morning or a craft beer come evening, you'll find a buzzing atmosphere all day long at The Jones Café & Bar.

Against a backdrop of indie music, lacquer tables, reclaimed material turned art pieces, and striking neon accents, revel in this chill NYC-inspired hangout spot that easily — and deliciously — makes the transition from day to night.





DISTRICT

BRASSERIE · BAR · LOUNGE

Meet District, a modern brasserie that knows what you're in the mood for, whether it's the daily power brunch or a dinner of fresh grilled seafood. Step into the sunken bar for a cocktail before lunch, or find your way to the outdoor terrace come early evening, a sophisticated spot to escape the hustle and bustle of Shinjuku. There's a creative energy within the four distinct areas, one to match any occasion, reflected in the curated design details. District's vibe invites you to linger, so order a bottle of wine and settle in for as long as you'd like.



86

EIGHTY SIX

High above the Shinjuku skyline sits our rooftop penthouse bar, "86", which specialises in artsy and sexy cocktails inspired by the American Prohibition era. Savour our creative and experimental dishes in an exclusive, urban oasis where chaos translates to comfort, awaiting the immersion of those who dare to enter.



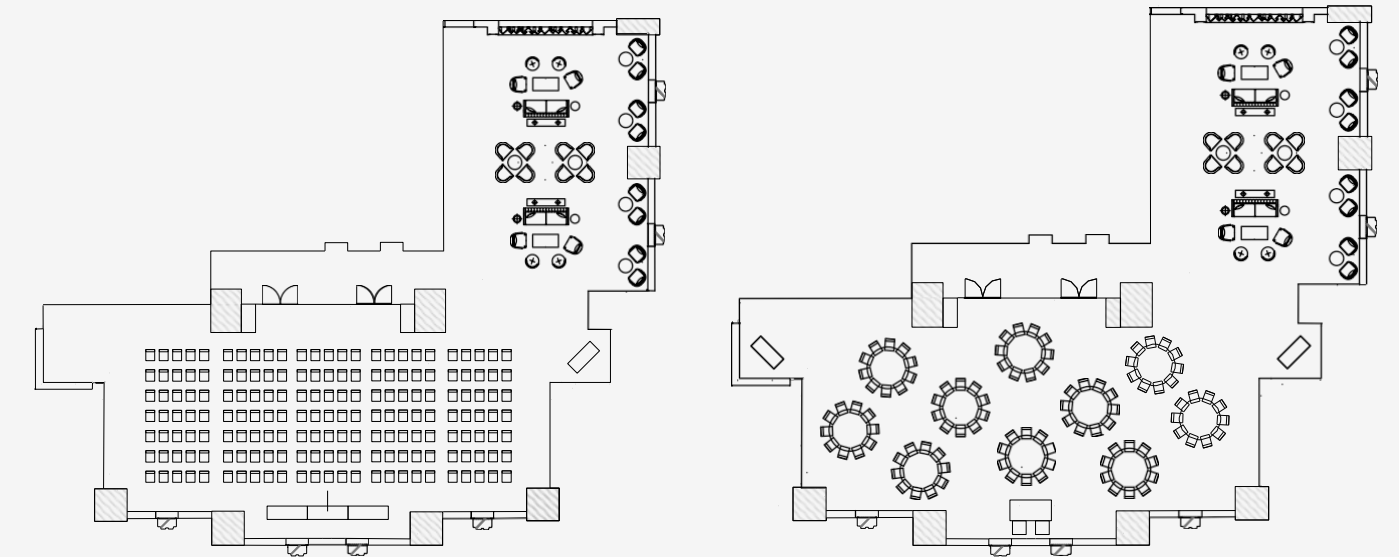
Meeting and Events Spaces

A CREATIVE PLACE TO GATHER

For an event that will stand out from the crowd, Kimpton Shinjuku Tokyo features meeting spaces unlike anything else in Tokyo. We have an art exhibit space that works equally well as a wedding chapel or a runway for fashion shows, plus ballrooms with beautiful floor-to-ceiling windows that are blank slates just waiting to be customized with your outside-the-box ideas.

SIZE UP THE SITUATION

Whether you're hosting a sit-down dinner for friends, a cocktail reception with canapes, or an intimate wedding ceremony, we have the event floor plan for you. Take a look at the capacity chart below and see which rooms you might like to try on for size.

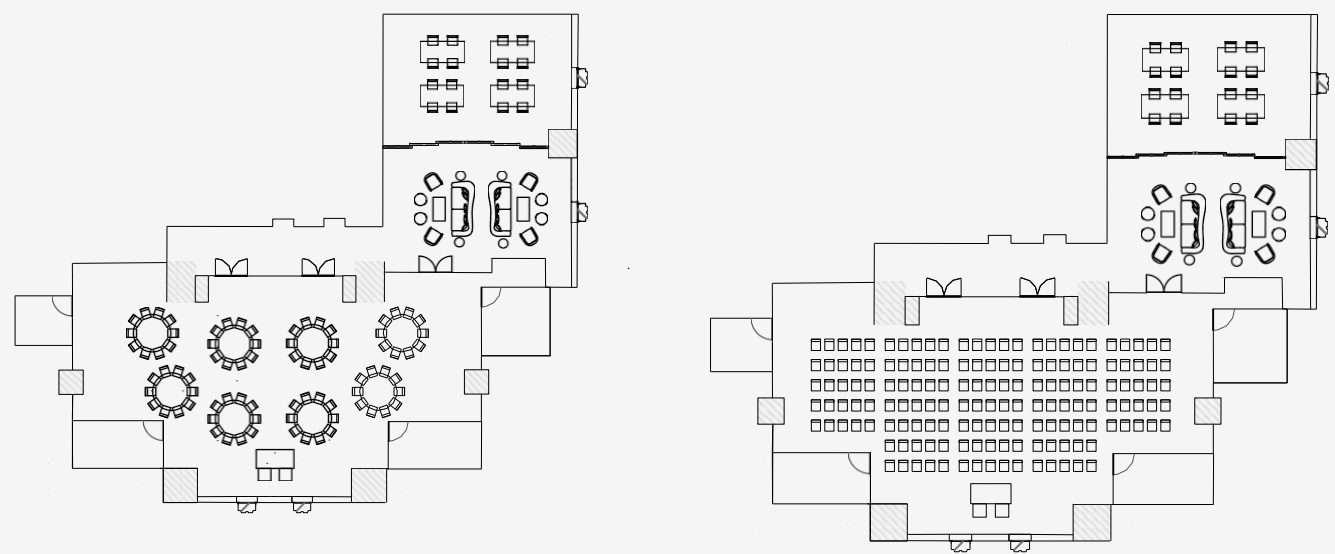


BOWERY

The Bowery features a bronze metal inlay reminiscent of the rolling hills of Japan. An elegant bubble chandelier with rose-tinted glass reflects the mirrored ceiling above, creating an illusion of endless glittering lights.

14/F
196m²

Layout	Capacity
Theatre	175
Banquet	100
Classroom	84
Boardroom	54
Narrow U-Shape	42
Wide U-Shape	30
Square Banquet	84
Reception	150



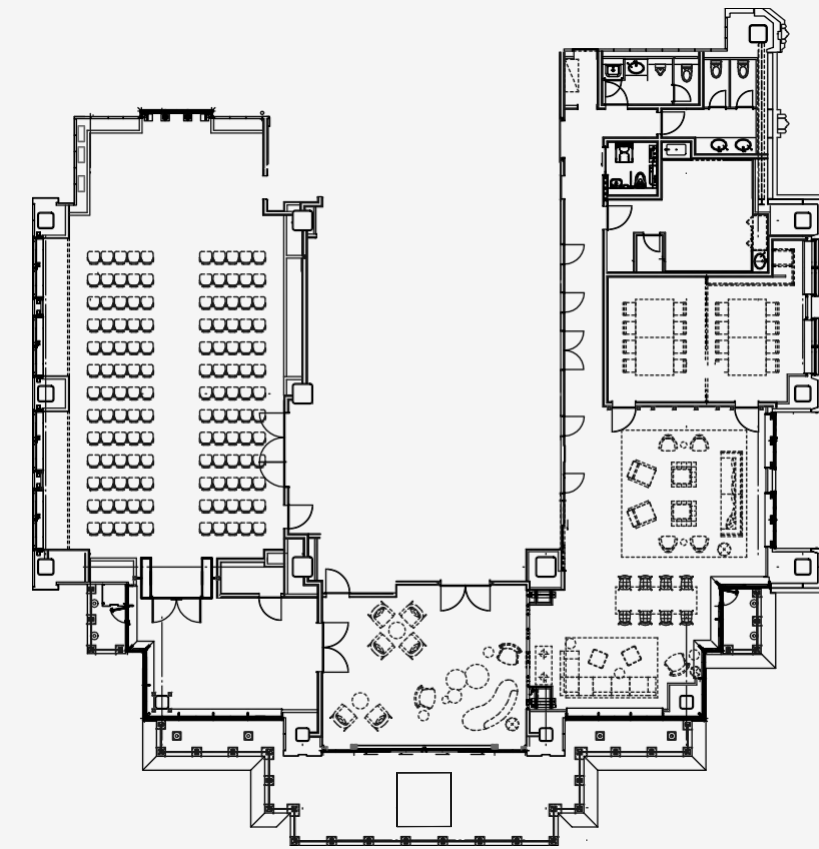
LAFAYETTE

The floor-to-ceiling windows in the Lafayette put a contemporary twist on the time-honored art of stained glass. Sculpted metal chandeliers that hang overhead are evocative of hanging bouquets.

15/F
165m²

Layout	Capacity
Theatre	155
Banquet	80
Classroom	72
Boardroom	42
Narrow U-Shape	33
Wide U-Shape	27
Square Banquet	72
Reception	100



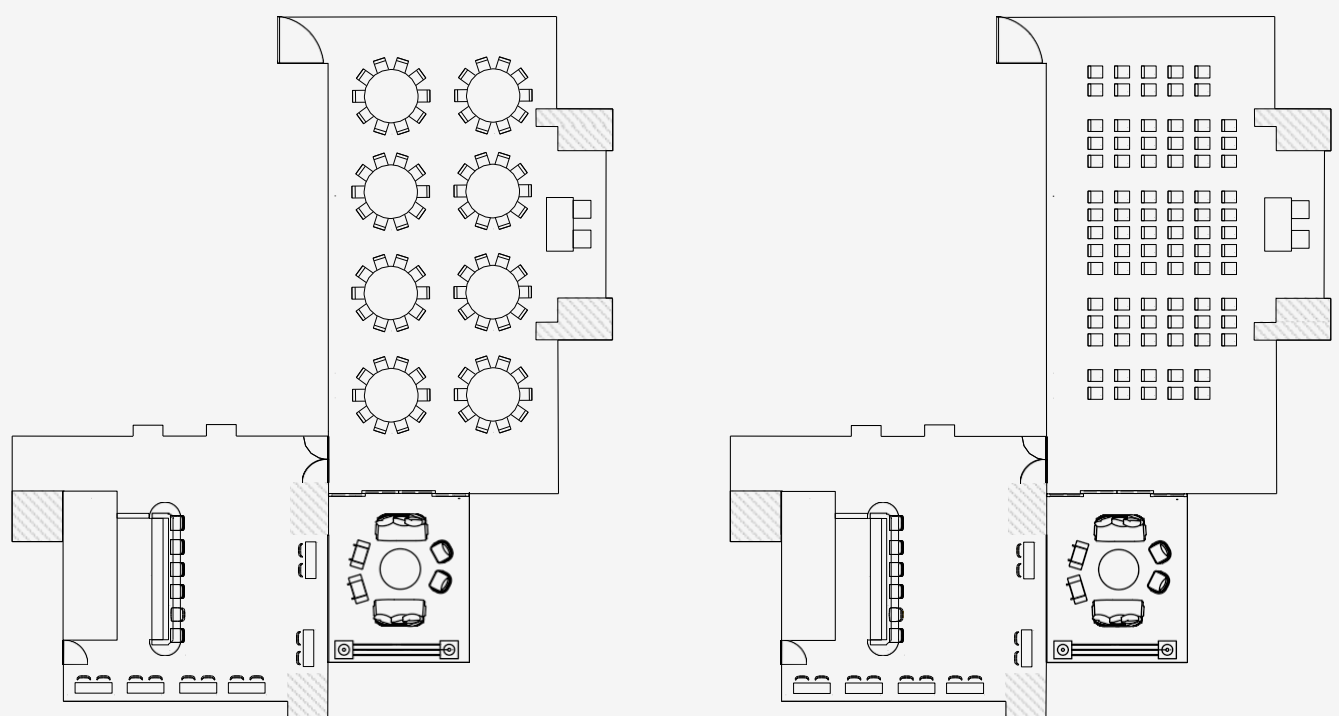


THE GALLERY

This art gallery artfully transitions into a space for weddings, exhibitions, social events, or even fashion shows, featuring floor-to-ceiling windows and textured wood panels that draw the eye toward the skylight above. An adjacent pre-function space provides opportunities for guests to mingle beforehand.

16/F
135m²

Layout	Capacity
Reception	150
Theater	130

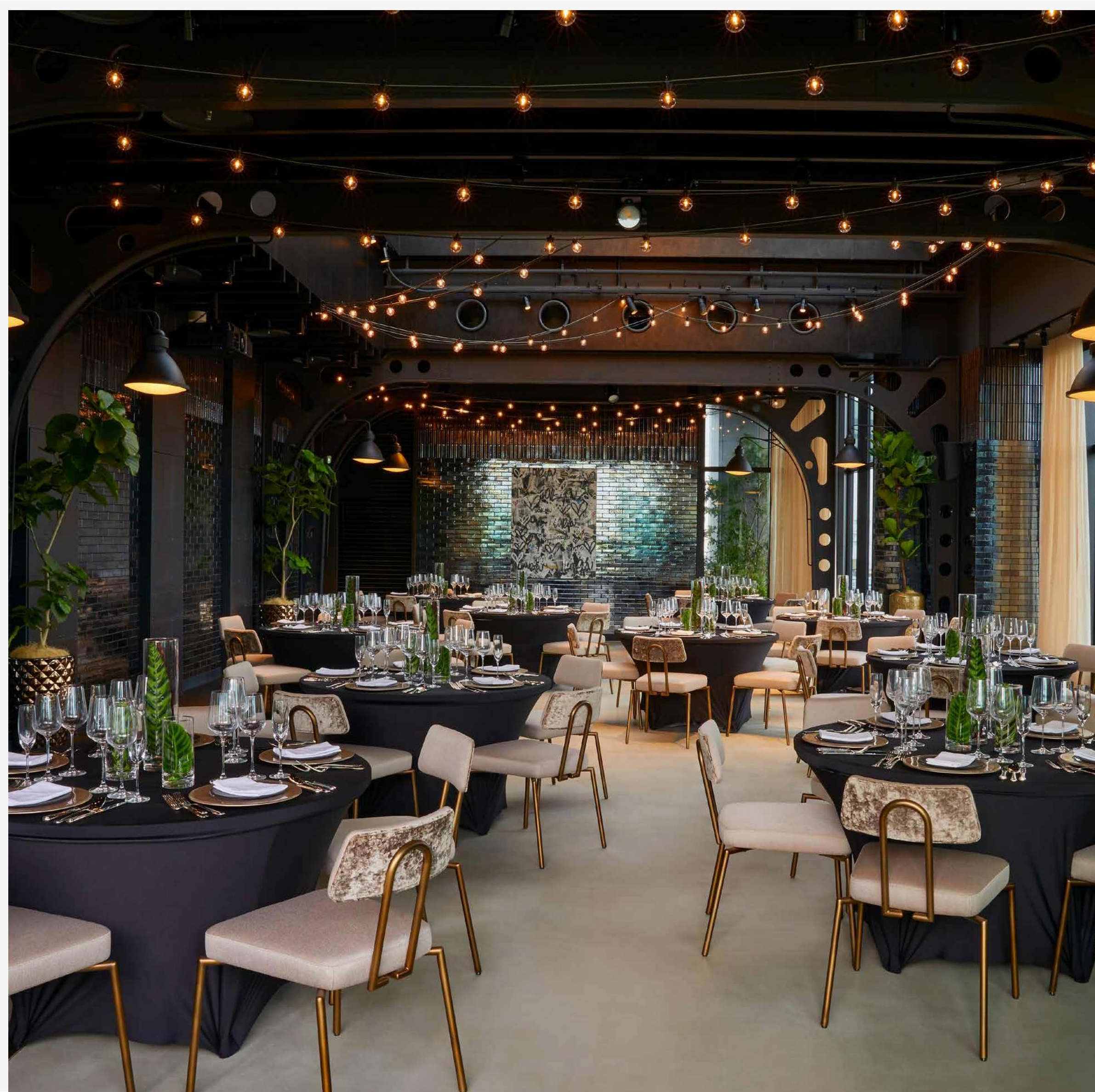


LOFT

The Loft brings the feeling of NYC to Tokyo with its open ceiling, skylight, and industrial steel structure. Custom lights arch over the ballroom, and staggered wood plank flooring transitions into a concrete floor. Views of Yoyogi Park and city lights at night will impress even locals.

17/F
126m²

Layout	Capacity
Theatre	86
Banquet	70
Classroom	60
Boardroom	42
Narrow U-Shape	33
Wide U-Shape	27
Square Banquet	72
Reception	80



Catering

That Rises to Your Occasion

Bold flavors, sustainable ingredients, and seasonal dishes are at the heart of all of Kimpton Shinjuku Tokyo's restaurants, and you can expect the same from our catering menus. Dial up the personalization by working with our curators to craft the food and drink options that will optimally complement your event.



A modern hotel lobby with a curved ceiling featuring horizontal wooden slats. The walls are covered in a textured, light-colored material. Large windows with black frames and a diamond pattern are in the center. Two large potted plants are on either side of the windows. The floor has a geometric pattern.

KIMPTON
SHINJUKU
TOKYO

Let us help you organize a custom meeting that's anything but business as usual. Just call or email us and an expert member of our team will be in touch to guide you through all the details to ensure your event is a success.

Call Kimpton Shinjuku Tokyo

+81 (0) 3 6258 1111

Email us at sales@kimptonshinjuku.tokyo

www.kimptonshinjuku.com

CONTACT US