



KIMPTON
SHINJUKU
TOKYO

New York Meets Tokyo

- Manhattan meets Shinjuku

Like the best galleries, there is always something new to see and experience, from art installations to retail pop-ups and locally loved restaurants. The hotel soaks up the energy from the bustling Shinjuku district —one of the city's most iconic areas —and manages to offer a slice of serenity within it, a calm oasis with a relaxing terrace bar, seamless service, and luxurious rooms with beds you can sink into. We're able to offer you some little extras that will make your event shine - including complimentary Wi-Fi for your delegates and creative meeting and event concept consultation with our event curator.

For an event that will stand out from the crowd, our meeting and event spaces are unlike anything else in Tokyo. We have a multifunctional space that works well as an art exhibition space, weddings, runway for fashion shows, plus ballrooms with beautiful floor-to-ceiling windows that are blank slates just waiting to be customized with your outside-the-box ideas. Located in the famed skyscraper district of Shinjuku, Kimpton Shinjuku Tokyo is where culture and creativity come to life. You'll have the opportunity to work with our talented culinary team to find just the right menu for your meeting or event —we're happy to offer suggestions or work from scratch to bring your vision to the plate.

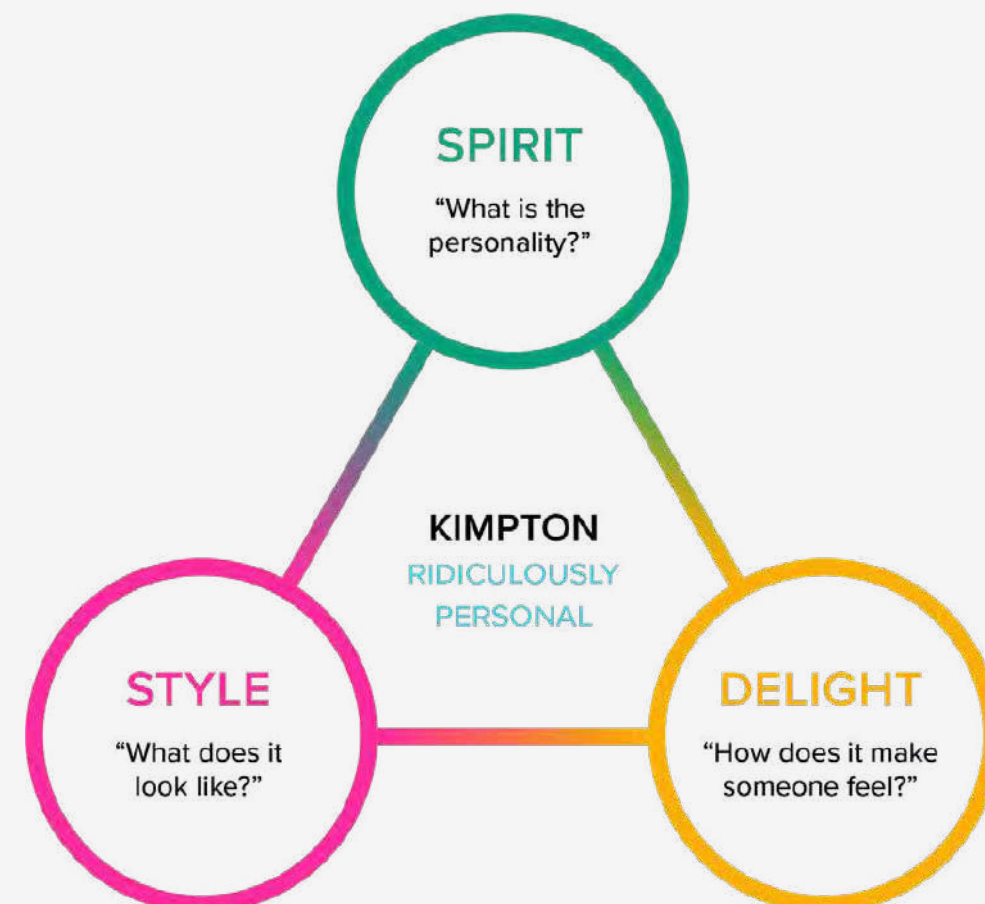
We look forward to guiding you through all the details to ensure your event is a success.



KIMPTON®

HOTELS & RESTAURANTS

- Service excellence with genuine delivery
- Luxury without the fuss
- Locally loved Restaurants and Bars
- Design leadership
- Inventive meetings and events
- Human consciousness



WELCOME TO JAPAN



Attractions near TOKYO

② KUSATSU

- 🚄 Approx. 3 hours
- 🚗 Approx. 2 hours



① NIKKO

- 🚄 Approx. 3 hours
- 🚗 Approx. 2 hours



⑤ MT. FUJI

- 🚄 Approx. 2.5 hours
- 🚗 Approx. 1.5 hours



③ YOKOHAMA

- 🚄 Approx. 50 minutes
- 🚗 Approx. 45 minutes



⑥ HAKONE

- 🚄 Approx. 2 hours
- 🚗 Approx. 2 hours



④ KAMAKURA

- 🚄 Approx. 1.5 hours
- 🚗 Approx. 1.5 hours



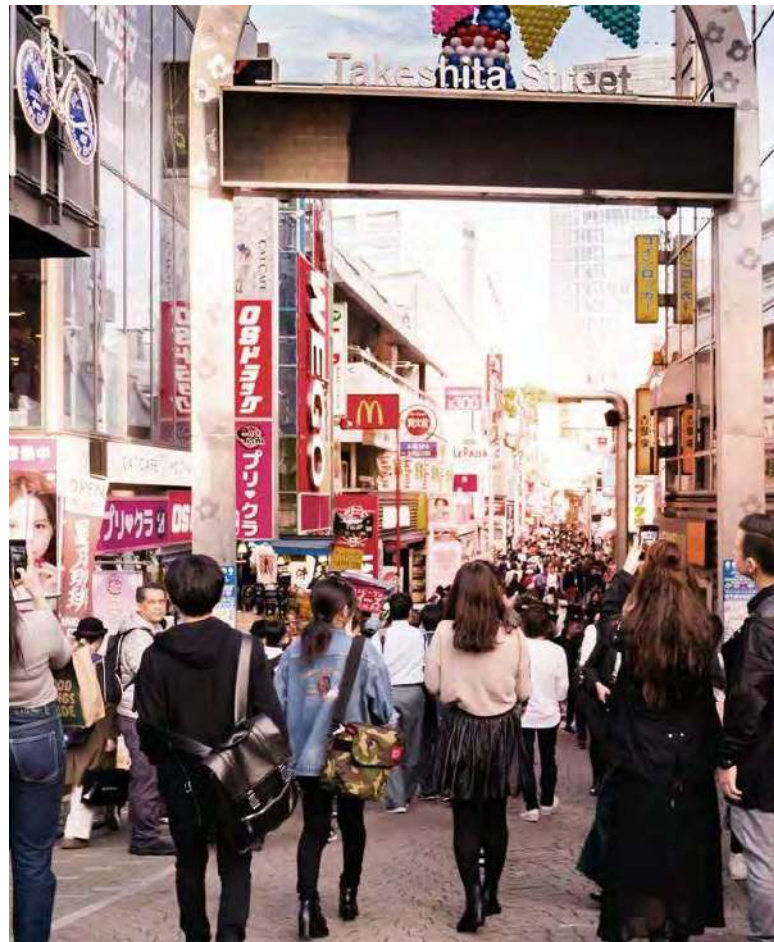
WELCOME TO SHINJUKU

When you think of Tokyo, Shinjuku is likely to come to mind —it's like a city unto itself, an iconic district filled with bright lights, soaring skyscrapers, entertainment options galore, and trendy boutiques.

Kimpton Shinjuku Tokyo is close to all the action, including Shinjuku Central Park, Shinjuku Gyoen (famous for its cherry blossoms), Yoyogi Park, Meiji Shrine, Harajuku, and Omotesando. Take in the panoramic views from atop the Tokyo Metropolitan Building, wander the narrow alleyways of Golden Gai, ride a bike to Yoyogi Park, or marvel at the pulsating energy of Shibuya Crossing, considered to be the busiest intersection in the world —it's all within easy reach.



Shinjuku Gyoen




Harajuku Takeshita Street




Kabukicho

 Approx. 7 minutes

 Approx. 23 minutes


 Approx. 7 minutes

 Approx. 13 minutes

 Approx. 43 minutes

 Approx. 13 minutes

 Approx. 10 minutes

 Approx. 26 minutes

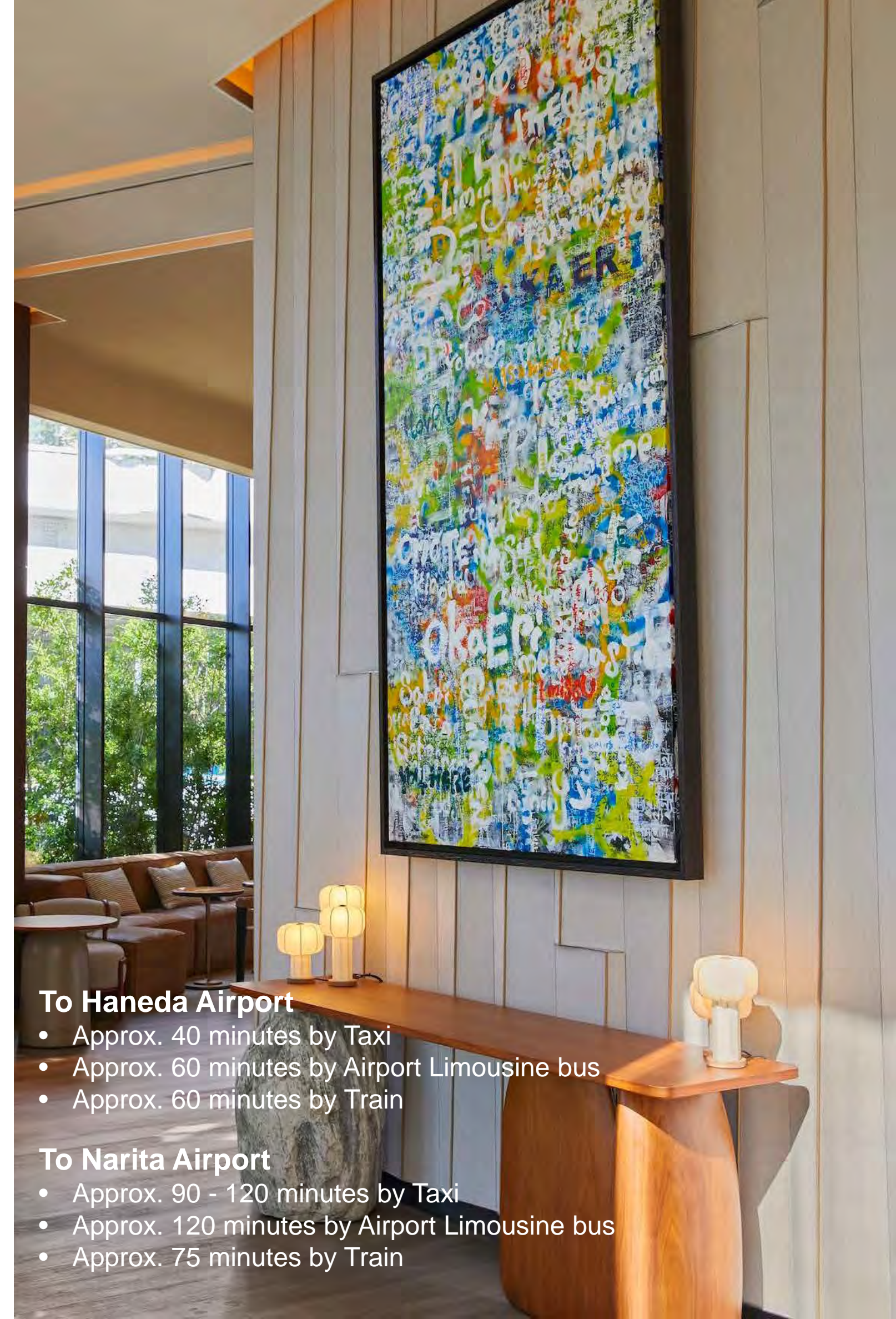
 Approx. 7 minutes

To Haneda Airport

- Approx. 40 minutes by Taxi
- Approx. 60 minutes by Airport Limousine bus
- Approx. 60 minutes by Train

To Narita Airport

- Approx. 90 - 120 minutes by Taxi
- Approx. 120 minutes by Airport Limousine bus
- Approx. 75 minutes by Train



—Ridiculously Personal—

At Kimpton Shinjuku Tokyo, we believe heartfelt, human connections make people's lives better. The spirit of Kimpton and its people started with one person: Bill Kimpton, the founder of Kimpton Hotel & Restaurants Group.

Bill had a new vision of hospitality when he started Kimpton. He rebelled against impersonal, generic, formulaic hotels that make people feel disconnected. He didn't think travel should be lonely, stressful, or disorienting. So he initiated a new hotel standard that focused on building a family—a home away from home—where guests and employees alike were treated as individuals. They could feel a sense of human connection, and feel safe exploring exciting new local experiences, food, and people.



MORNING KICKSTART

Kickstart your day and shake off the jet lag. Wake up to artisanal coffee. Stay infused with a local and delicate latte or enjoy your cup of tea. A good and energetic start in the mornings always ends up with a successful day!



SOCIAL HOUR

Sip & socialize with complimentary drinks & bites at our evening Social Hour. The much-loved Kimpton Social Hour is held daily to provide guests an opportunity to connect with others over complimentary drinks. Mingle with the locals whilst letting our team connect with you to ensure we deliver the ridiculously personal touch synonymous to Kimpton.



SENSE OF DIFFERENCE

An Art Deco, architectural classic designed by the prominent Rockwell Group in NY to celebrate your arrival. The impressionism wall design by the artist Kusumi and stylish Doorman in a wardrobe by designer Oka (graduate from our neighbor- Bunka Fashion College) will greet you in style. Get ready, the show starts. An Instagram opportunity of the luxury items at the Concept Store that capture your eyes and excite you about your stay at Kimpton Shinjuku Tokyo.



STAY WELL

Stay refreshed with a class on the higher floors overlooking Yoyogi Park and the rising sun, and our gym is open 24H with a personal fitness coach available upon request. Pep Cycles and a detailed running map help you get out to stretch your legs and enjoy the four seasons of Japan.

ROOM TYPES

TOTAL ROOMS: 130

CONNECTING ROOMS: 22

1x THE SHINJUKU SUITE
70 square meters
1-2 adults
1 King bed
Living space within guest room City view
Super-sized bathroom with impressive view of the city from the deep relaxing bath, rain shower and amenities from Atelier Bloem and Garnier Thiebaut

3x STUDIO SUITE KING
ADDITIONAL LIVING AREA
52 square meters
1-2 adults
1 King bed
Living space within guest room Views of Yoyogi Park or Shinjuku Central Park
Rain shower and amenities from Atelier Bloem and Garnier Thiebaut

3x SUTUDIO SUITE TWIN
ADDITIONAL LIVING AREA
54 square meters
1-2 adults
Choice of 1 King or 2 Single beds Living space within guest room Views of city, Yoyogi Park, or Shinjuku Central Park

2x STUDIO SUITE KING
40 square meters
1-3 adults
1 King bed City view
Impressive view of the city from the deep relaxing bath, rain shower and amenities from Atelier Bloem and Garnier Thiebaut

3x STUDIO SUITE TWIN
40 square meters
1-3 adults
2 Single beds City view
Impressive view of the city from the deep relaxing bath, rain shower and amenities from Atelier Bloem and Garnier Thiebaut

19x PREMIUM KING
ADDITIONAL LIVING AREA
36 square meters
1-2 adults
1 King bed
Views of Yoyogi Park or Shinjuku Central Park
Bathroom with a deep relaxing bath, rain shower and amenities from Atelier Bloem and Garnier Thiebaut (Connecting rooms available upon request when booking)

19x PREMIUM KING
33 square meters
1-2 adults
1 King bed
Views of Yoyogi Park or Shinjuku Central Park
Bathroom with a deep relaxing bath, rain shower and amenities from Atelier Bloem and Garnier Thiebaut (Connecting rooms available upon request when booking)

60x ESSENTIAL KING(29)/ TWIN(41)
28 square meters
1-2 adults
Choice of 1 King or 2 Single beds Views of Yoyogi Park or Shinjuku Central Park
Bathroom with a deep relaxing bath, rain shower and amenities from Atelier Bloem and Garnier Thiebaut (Connecting rooms available upon request when booking)

17x 1 KING ESSENTIAL WALK-IN SHOWER
30-31 square meters
1-2 adults
1 King bed City view. Bathroom with rain shower and amenities from Atelier Bloem and Garnier Thiebaut

3x DELUXE TWIN
24 square meters
1-2 adults
2 Single beds
Views of Yoyogi Park or Shinjuku Central Park
Bathroom with rain shower and amenities from Atelier Bloem and Garnier Thiebaut

Guest Rooms





THE SHINJUKU SUITE

- 1x** THE SHINJUKU SUITE
- 70 square meters
 - 1-2 adults
 - 1 King bed
 - Living space within guest room
 - City view
 - Super-sized bathroom with impressive view of the city from the deep relaxing bath, rain shower and amenities from Atelier Bloem and Garnier Thiebaut



STUDIO SUITE

3x STUDIO SUITE KING ADDITIONAL LIVING AREA

52 square meters
1-2 adults
1 King bed
Living space within guest room Views of Yoyogi Park or Shinjuku Central Park
Rain shower and amenities from Atelier Bloem and Garnier Thiebaut

3x STUDIO SUITE TWIN ADDITIONAL LIVING AREA

54 square meters
1-2 adults
Choice of 1 King or 2 Single beds Living space within guest room Views of city, Yoyogi Park, or Shinjuku Central Park

2x STUDIO SUITE KING

40 square meters
1-3 adults
1 King bed City view
Impressive view of the city from the deep relaxing bath, rain shower and amenities from Atelier Bloem and Garnier Thiebaut

3x STUDIO SUITE TWIN

40 square meters
1-3 adults
2 Single beds City view
Impressive view of the city from the deep relaxing bath, rain shower and amenities from Atelier Bloem and Garnier Thiebaut



PREMIUM ROOMS

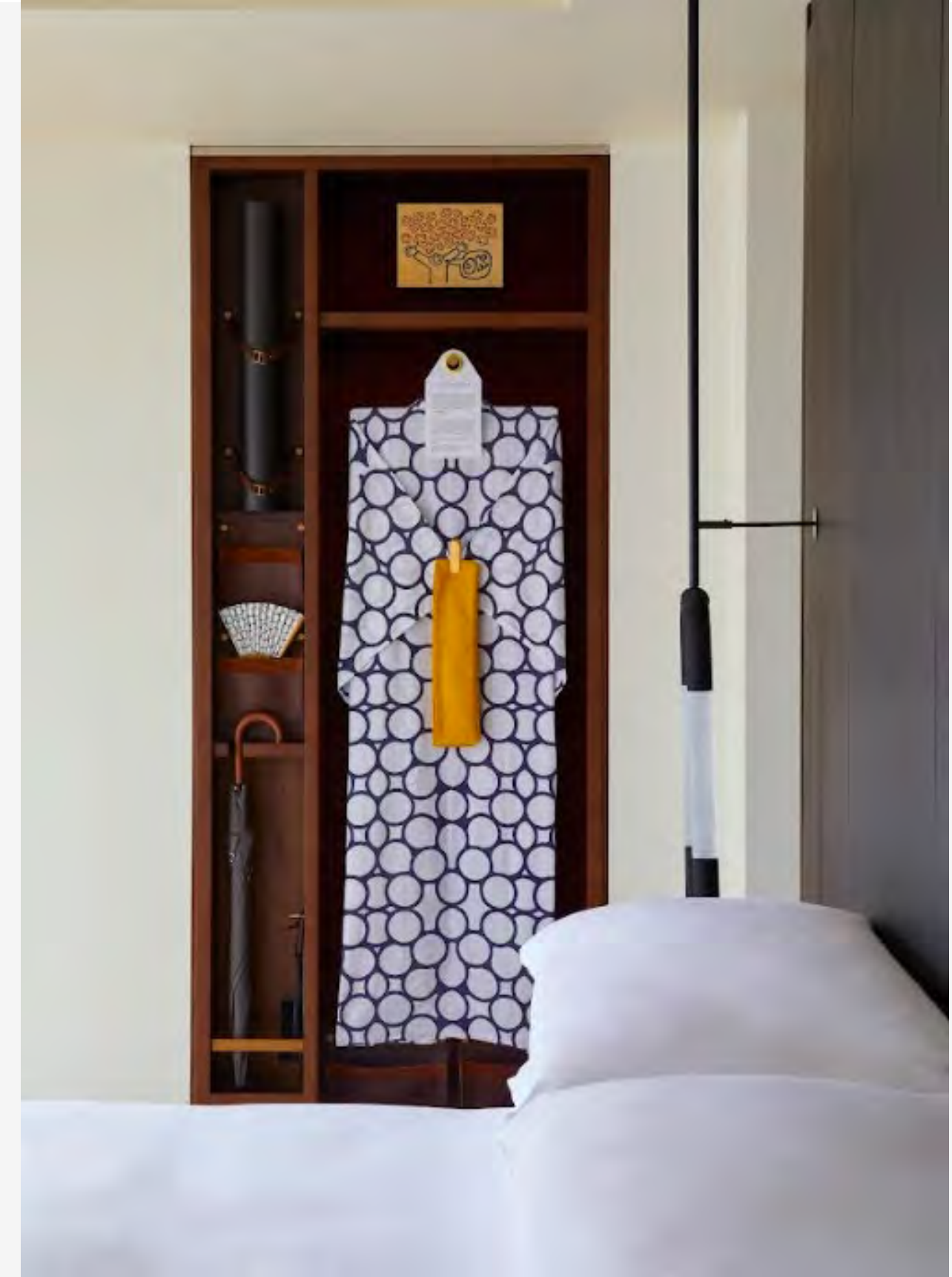
19x PREMIUM KING ADDITIONAL LIVING AREA

36 square meters
 1-2 adults
 1 King bed
 Views of Yoyogi Park or
 Shinjuku Central Park
 Bathroom with a deep relaxing bath,
 rain shower and amenities from
 Atelier Bloem and Garnier Thiebaut
 (Connecting rooms available upon
 request when booking)



19x PREMIUM KING

33 square meters
 1-2 adults
 1 King bed
 Views of Yoyogi Park or
 Shinjuku Central Park
 Bathroom with a deep
 relaxing bath, rain shower and
 amenities from Atelier Bloem
 and Garnier Thiebaut
 (Connecting rooms available
 upon request when booking)



ESSENTIAL ROOMS

60x ESSENTIAL KING(29)/ TWIN(41)

28 square meters
 1-2 adults
 Choice of 1 King or 2 Single beds
 Views of Yoyogi Park or Shinjuku Central Park. Bathroom with a deep relaxing bath, rain shower and amenities from Atelier Bloem and Garnier Thiebaut (Connecting rooms available upon request when booking)

17x 1 KING ESSENTIAL WALK-IN SHOWER

30-31 square meters
 1-2 adults
 1 King bed City view. Bathroom with rain shower and amenities from Atelier Bloem and Garnier Thiebaut

3x DELUXE TWIN

24 square meters
 1-2 adults
 2 Single beds
 Views of Yoyogi Park or Shinjuku Central Park
 Bathroom with rain shower and amenities from Atelier Bloem and Garnier Thiebaut

Restaurants and Bars

Luxury Dining in Tokyo

You'll find a buzzing atmosphere all day long at Kimpton Shinjuku Tokyo. On the 1st floor, The Jones Café | Bar is the perfect spot for a wake-me-up espresso in the morning or a craft beer in the evening. With its indie music and NYC vibe, you'll find a buzzing atmosphere all day long. At District on the 2nd floor, sit down for a leisurely lunch in the dining room, sink into the cozy chairs accompanied by appetizers on the outdoor terrace, or grab a glass of wine and linger in the lounge. High above the Shinjuku skyline sits our rooftop penthouse bar, "86", which specializes in artsy and sexy cocktails inspired by the American Prohibition era.

Kimpton is a brand-wide [pet-friendly](#) hotel. (At District Brasserie • Bar • Lounge, we welcome your pets to our terrace and lounge area.) Please do inform us in advance if you have any animal allergies.

At District – Brasserie, Bar, Lounge and The Jones Café | Bar, we welcome up to 4 pets maximum per reservation.

At 86, we love welcoming your pet (up to 1 per two guests).

THE JONES

Whether you're looking for a wake-me-up espresso in the morning or a craft beer come evening, you'll find a buzzing atmosphere all day long at The Jones Café & Bar.

Against a backdrop of indie music, lacquer tables, reclaimed material turned art pieces, and striking neon accents, revel in this chill NYC inspired hangout spot that easily — and deliciously — makes the transition from day to night.





DISTRICT

BRASSERIE · BAR · LOUNGE

Meet District, a modern brasserie that knows what you're in the mood for, whether it's the daily power brunch or a dinner of fresh grilled seafood. Step into the sunken bar for a cocktail before lunch or find your way to the outdoor terrace come early evening, a sophisticated spot to escape the hustle and bustle of Shinjuku. There's a creative energy within the four distinct areas, one to match any occasion reflected in the curated design details. District's vibe invites you to linger, so order a bottle of wine and settle in for as long as you'd like.



86

High above the Shinjuku skyline sits our rooftop penthouse bar, "86", which specializes in artsy and sexy cocktails inspired by the American Prohibition era. Savour our creative and experimental dishes in an exclusive, urban oasis where chaos translates to comfort, awaiting the immersion of those who dare to enter.

A modern lounge area with a large, multi-armed chandelier, a long beige sofa, and a display cabinet. The room features a mix of neutral tones and textures, with a large window on the right side. The chandelier is a prominent feature, with several arms extending outwards, each ending in a glowing spherical light. The sofa is a long, low-profile piece with several pillows. In the background, there is a display cabinet with various decorative items. The overall atmosphere is sophisticated and contemporary.

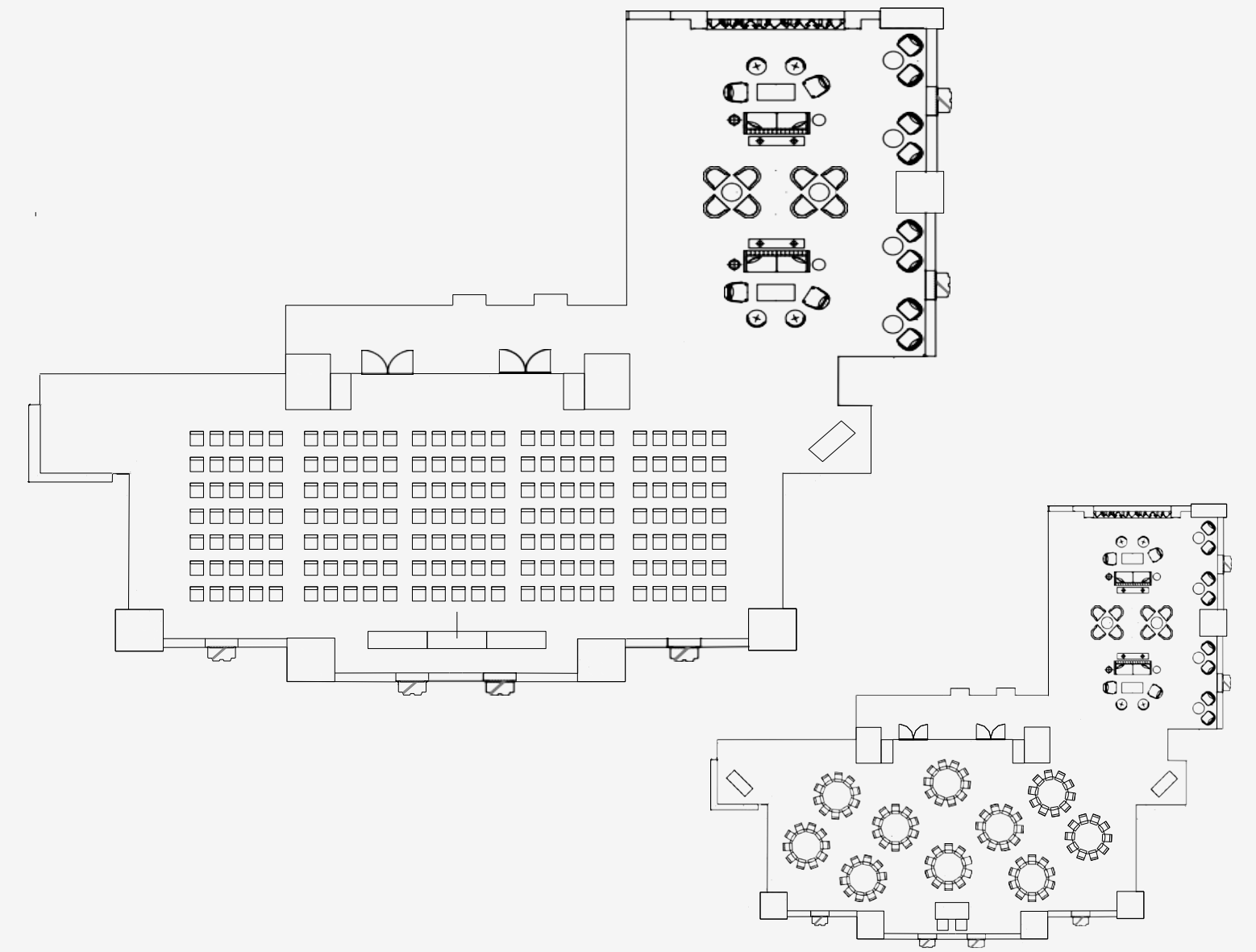
Meeting and Events Spaces

A CREATIVE PLACE TO GATHER

For an event that will stand out from the crowd, Kimpton Shinjuku Tokyo features meeting spaces unlike anything else in Tokyo. We have an art exhibit space that works equally well as a wedding chapel or a runway for fashion shows, plus ballrooms with beautiful floor-to-ceiling windows that are blank slates just waiting to be customized with your outside-the-box ideas.

SIZE UP THE SITUATION

Whether you're hosting a sit-down dinner for friends, a cocktail reception with canapés, or an intimate wedding ceremony, we have the event floor plan for you. Take a look at the capacity chart below and see which rooms you might like to try on for size.

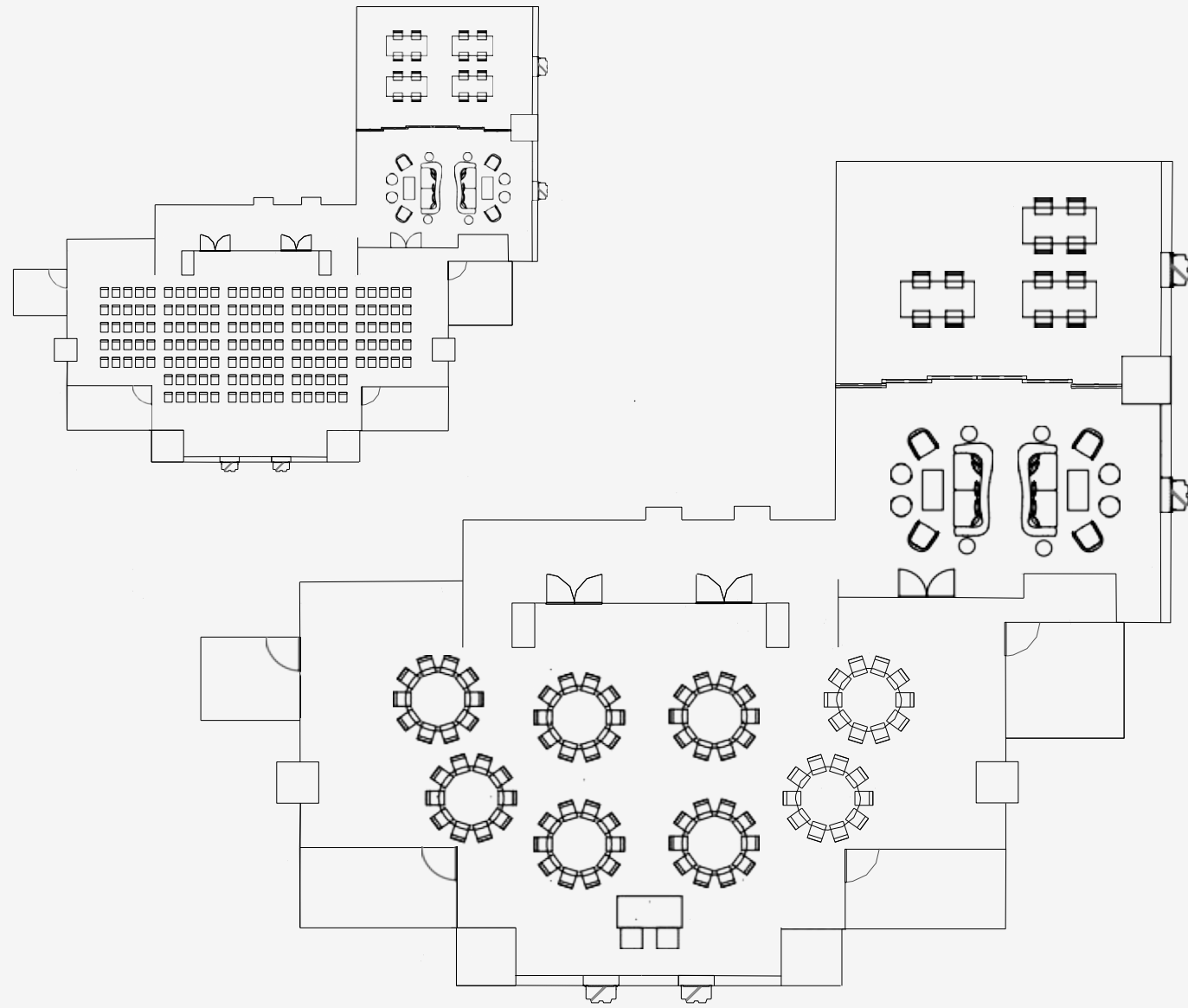


BOWERY

The Bowery features a bronze metal inlay reminiscent of the rolling hills of Japan. An elegant bubble chandelier with rose-tinted glass reflects the mirrored ceiling above, creating an illusion of endless glittering lights.

14F
196m²

Layout	Capacity
Theatre	180
Banquet	130
Classroom	120
Boardroom	54
Narrow U-Shape	54
Wide U-Shape	36
Square Banquet	66
Reception	250



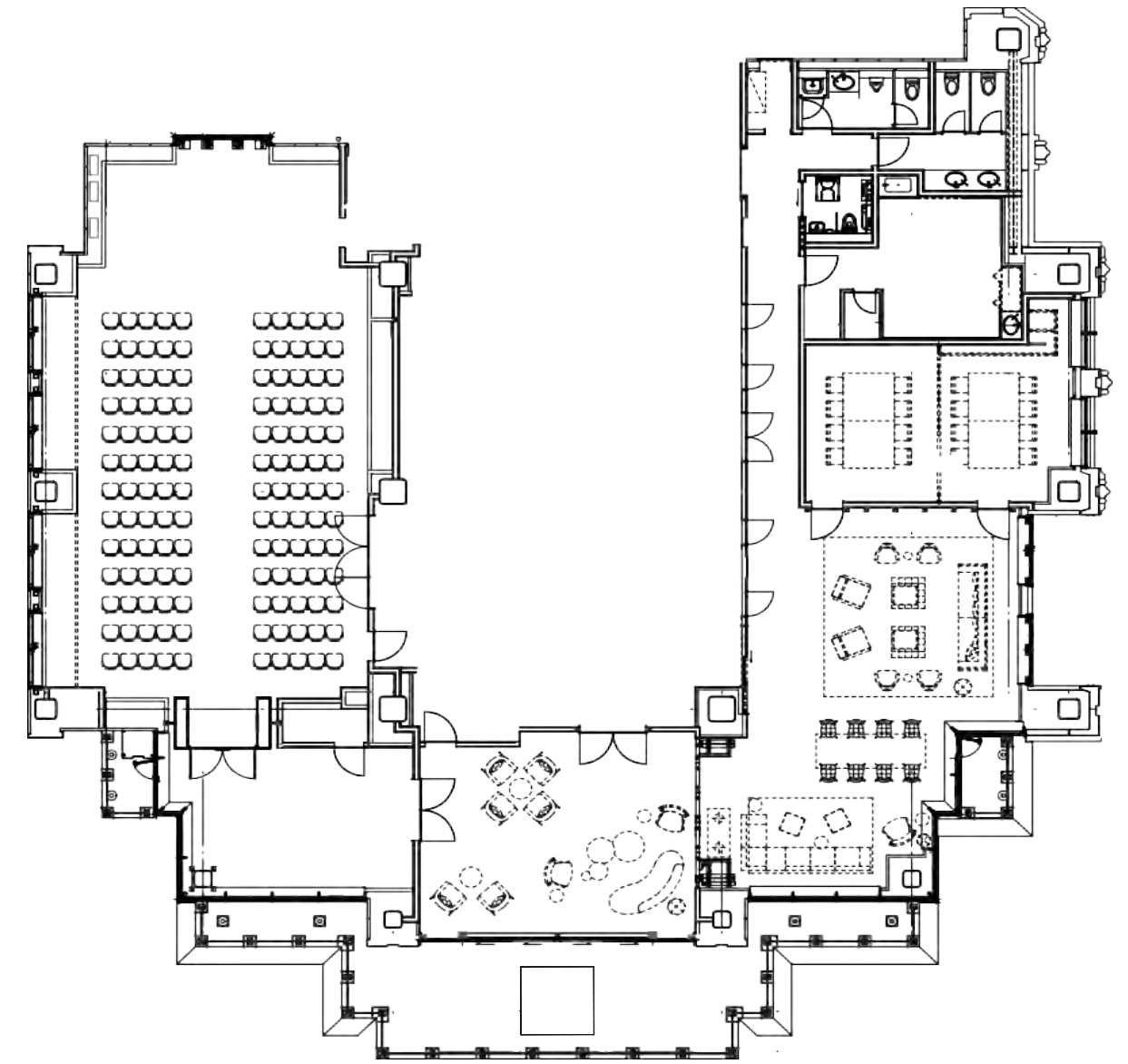
LAFAYETTE

The floor-to-ceiling windows in the Lafayette put a contemporary twist on the time-honored art of stained glass. Sculpted metal chandeliers that hang overhead are evocative of hanging bouquets.

Layout	Capacity
Theatre	155
Banquet	100
Classroom	99
Boardroom	48
Narrow U-Shape	48
Wide U-Shape	32
Square Banquet	54
Reception	200

15F
165m²



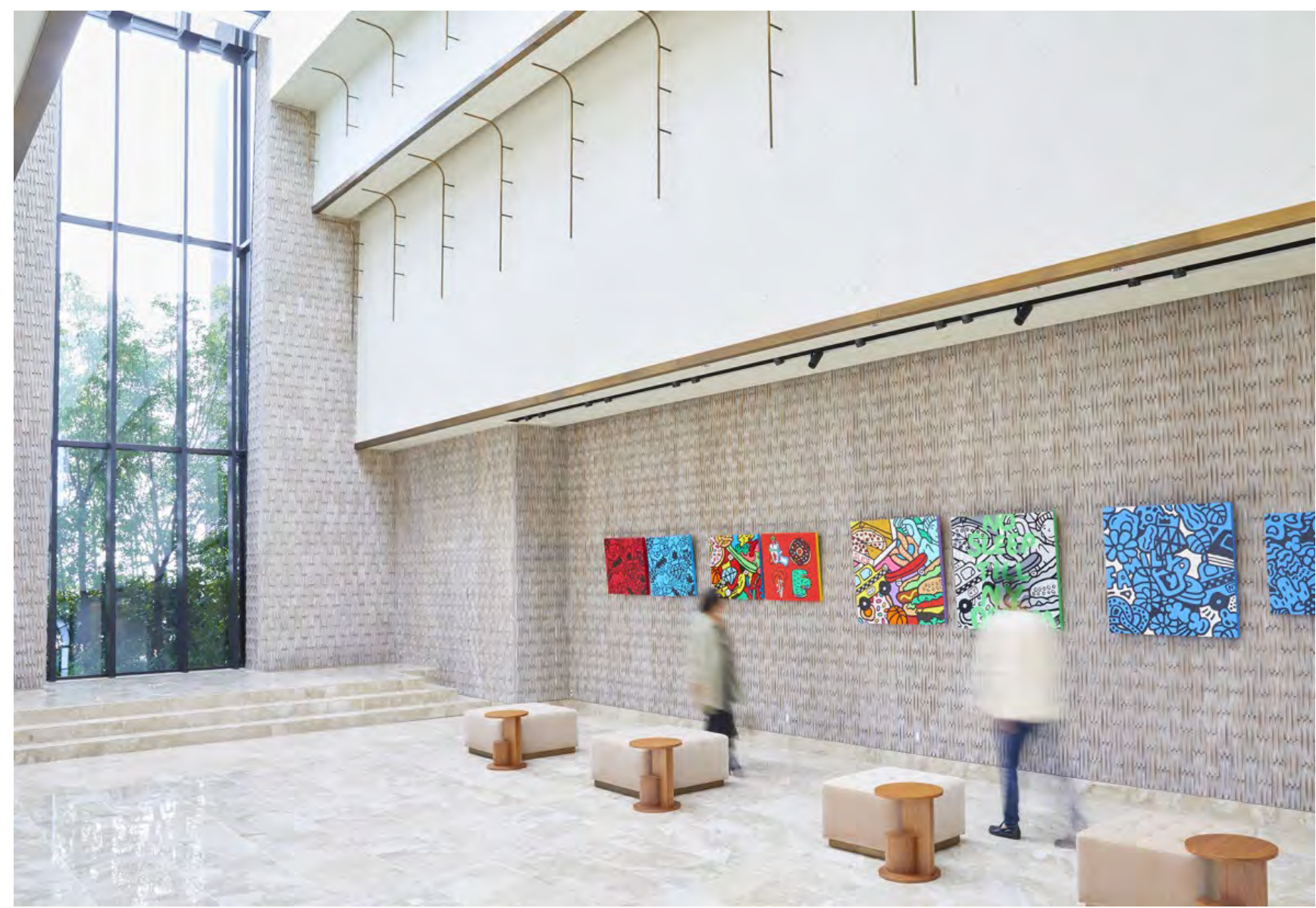


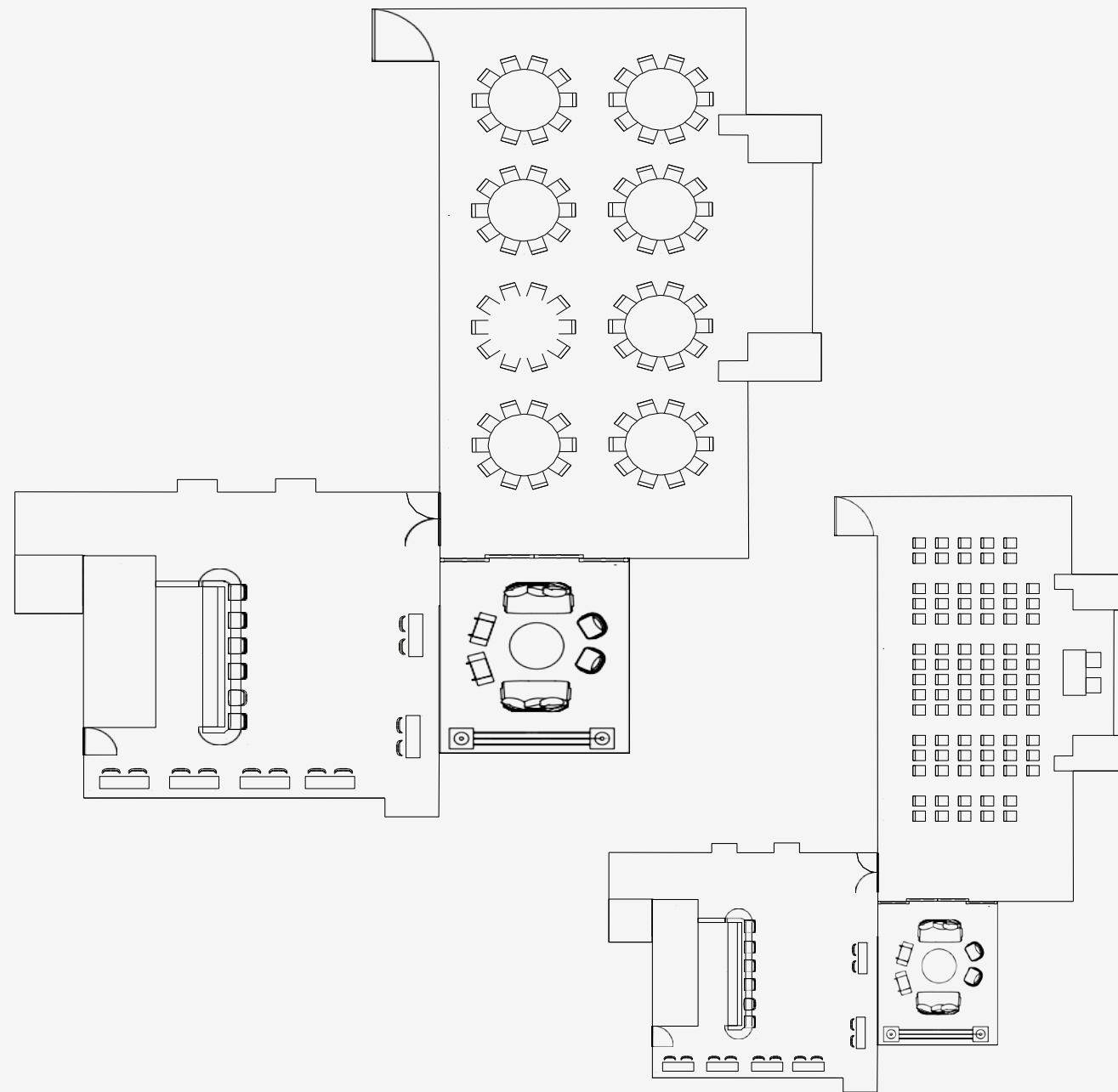
THE GALLERY

This art gallery artfully transitions into a space for weddings, exhibitions, social events, or even fashion shows, featuring floor-to-ceiling windows and textured wood panels that draw the eye toward the skylight above. An adjacent pre-function space provides opportunities for guests to mingle beforehand.

16F
135m²

Layout	Capacity
Theatre	150
Reception	180



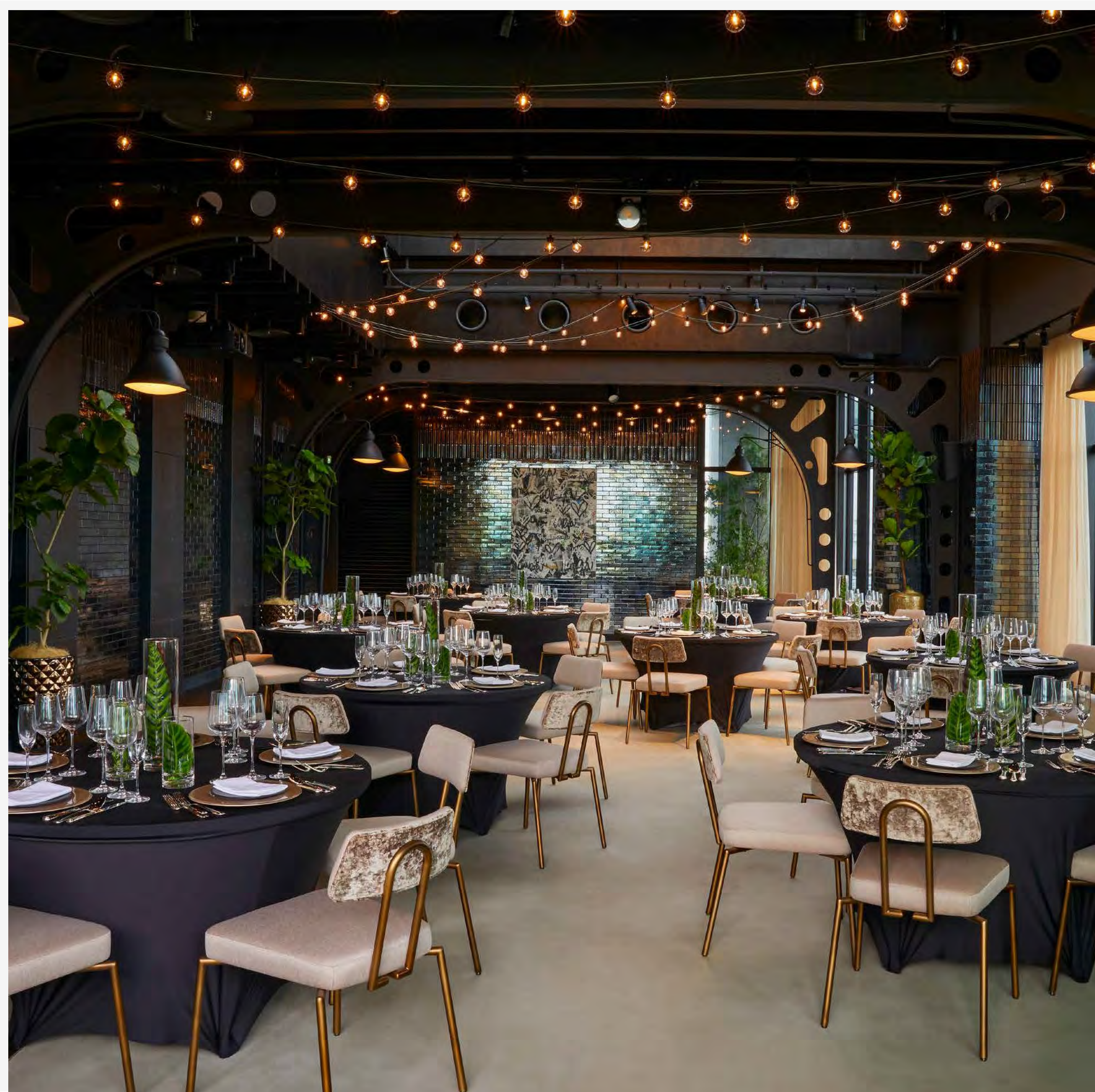


LOFT

The Loft brings the feeling of NYC to Tokyo with its open ceiling, skylight, and industrial steel structure. Custom lights arch over the ballroom, and staggered wood plank flooring transitions into a concrete floor. Views of Yoyogi Park and city lights at night will impress even locals.

17F
126m²

Layout	Capacity
Theatre	155
Banquet	90
Classroom	87
Boardroom	42
Narrow U-Shape	48
Wide U-Shape	32
Square Banquet	48
Reception	150



Catering

That Rises to Your Occasion

Bold flavors, sustainable ingredients, and seasonal dishes are at the heart of all of Kimpton Shinjuku Tokyo's restaurants, and you can expect the same from our catering menus. Dial up the personalization by working with our curators to craft the food and drink options that will optimally complement your event.



KIMPTON®

HOTELS & RESTAURANTS

Proud to support the **LGBTQ** Community

**LGBT Friendly
Hotels Japan**



Best Luxury Design Hotel
EAST ASIA

Best Luxury City Hotel
JAPAN

Best Luxury Lifestyle Hotel
JAPAN



IHG Green Engage™ system

We know that sustainability is as important to you as it is to us – and that’s why we’ve made it easy for you to stay at a hotel that shares your values. All our hotels use the IHG Green Engage system, an innovative online environmental sustainability system that gives our hotels the means to measure and manage their impact on the environment. The hotels can choose from over 200 ‘Green Solutions’ that are designed to help them reduce their energy, water and waste, and improve their impact on the environment.

The IHG Green Engage system has four levels of certification that our hotels can achieve and those achieving Level 3 certification or above can reduce energy use by up to 25%.



KIMPTON
SHINJUKU
TOKYO

CONTACT US

Let us help you organize a custom meeting that's anything but business as usual. Just call or email us and an expert member of our team will be in touch to guide you through all the details to ensure your event is a success.

Call Kimpton Shinjuku Tokyo

+81 (0) 3 6258 1111

Email us at sales@kimptonshinjuku.tokyo

www.kimptonshinjuku.com